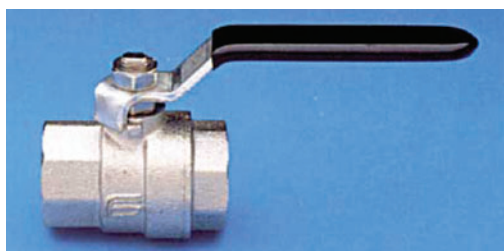


Group 7 Valves



FLUID CONTROL[®]

Page	Contents
2	Index
3	Low Pressure Hard Chrome-plated Brass / AISI 316 Ball Valves. BSP, NPT
4	3-way Low-pressure Hard Chrome-plated Brass / AISI 316 Ball Valves. BSP/NPT
5	Low-pressure Ball Valves with Hard Chrome-plated / AISI 316 Flanges
6	Needle / Regulation Valves. BSP
7	Butterfly Valves
8	High-pressure Steel Ball Valves / AISI 316. BSP, NPT type RKH, BKH, SKH
9	3-way High-pressure Steel Ball Valves. BSP, type BK3
10	High-pressure Ball Valves 6000 psi - 10000 psi.
11	Check Valves. Europa Low-pressure and Snap-Tite
12	Check Valves. Snap-Tite



BALL VALVE Type 115 Nickel-plated Brass Full Throughput

Construction:
Nickel-plated pressure-brass valve body.
Ball of hard chrome-plated brass.
Ball Seal - PTFE.
Stem Seal - PTFE. 1/4" - 2"

Pressure:	BSP:		NPT:
	1/4" - 1/2"	50 bar	50 bar
3/4" - 1"	40 bar	40 bar	
1.1/4" - 1.1/2"	30 bar	30 bar	
2"	25 bar	25 bar	
2.1/2"	18 bar	18 bar red. throughput	
3"	16 bar	14 bar red. throughput	
4"	14 bar	12 bar red. throughput	

Temp. Range: -20°C to +150°C

Applications:
Water, steam, compressed air, oils, fuel, liquefied gases, etc.

Dim. Conct. Thread	Type 115 Female BSP	Type 115 Female NPT
1/4"	T115-04RP	T115-04F
3/8"	T115-06RP	T115-06F
1/2"	T115-08RP	T115-08F
3/4"	T115-12RP	T115-12F
1"	T115-16RP	T115-16F
1.1/4"	T115-20RP	T115-20F
1.1/2"	T115-24RP	T115-24F
2"	T115-32RP	T115-32F
2.1/2"	T115-40RP	T115-40F
3"	T115-48RP	T115-48F
4"	T115-64RP	T115-64F



BALL VALVE Type 125 Stainless Steel AISI 316 Full Throughput

CONSTRUCTION:
AISI 316 stainless steel valve body, ball and spindle.
Ball Seal - PTFE.
Stem Seal - PTFE and Viton.
Comes with BSP and NPT female thread.

Pressure:	BSP/NPT	
	1/4" - 2"	69 bar
2.1/2" - 3"	63 bar	
4"	55 bar	

Temp. Range: -20°C to +180°C

APPLICATIONS:
Robust and solid ball valve for water, oil, gasoline, gas, air, steam, food articles and a variety of chemicals.

Dim. Conct. Thread	Type 125 Female BSP	Type 125 Female NPT
1/4"	T125-04RP	T125-04F
3/8"	T125-06RP	T125-06F
1/2"	T125-08RP	T125-08F
3/4"	T125-12RP	T125-12F
1"	T125-16RP	T125-16F
1.1/4"	T125-20RP	T125-20F
1.1/2"	T125-24RP	T125-24F
2"	T125-32RP	T125-32F
2.1/2"	T125-40RP	T125-40F
3"	T125-48RP	T125-48F
4"	T125-64RP	T125-64F



BALL VALVE Type 128
Nickel-plated Brass
3-way w/ L-bore

CONSTRUCTION:

Nickel-plated pressure-brass valve body.
Hard chrome-plated brass ball.
Ball Seal - PTFE.
Stem Seal - PTFE. 1/4" - 2"
Comes with BSP and NPT female thread.

Pressure: 1/4" - 2" BSP 25 bar

Temp. Range: -15°C to +120°C

APPLICATIONS:

Water, steam, compressed air, oils, fuel, liquefied gases, etc.

Dim. Conct. Thread	Type 125 Female BSP	Type 126 Handle
1/4"	T128-04RP	T126-04
3/8"	T128-06RP	T126-06
1/2"	T128-08RP	T126-08
3/4"	T128-12RP	T126-12
1"	T128-16RP	T126-16
1.1/4"	T128-20RP	T126-20
1.1/2"	T128-24RP	T126-24
2"	T128-32RP	T126-32

7



BALL VALVE Type 130/131
Stainless Steel AISI 316
T130: 3-way w/ L-bore
T131: 3-way m /T-bore

CONSTRUCTION:

AISI 316 stainless steel valve body, ball and spindle.
Ball Seal - PTFE.
Stem Seal - PTFE and Viton.
Comes with BSP and NPT female thread.

Pressure: 1/4" - 2" BSP/NPT 69 bar

Temp. Range: -15°C to +175°C

APPLICATIONS:

Robust and solid ball valve for water, oil, gasoline, gas, air, steam, food articles and a variety of chemicals.

Dim. Conct. Thread	L-bore Type 130 Female BSP	L-bore Type 130 Female NPT	T-bore Type 131 Female BSP	T-bore Type 131 Female NPT
1/4"	T130-04RP	T130-04NPT	T131-04RP	T131-04NPT
3/8"	T130-06RP	T130-06NPT	T131-06RP	T131-06NPT
1/2"	T130-08RP	T130-08NPT	T131-08RP	T131-08NPT
3/4"	T130-12RP	T130-12NPT	T131-12RP	T131-12NPT
1"	T130-16RP	T130-16NPT	T131-16RP	T131-16NPT
1.1/4"	T130-20RP	T130-20NPT	T131-20RP	T131-20NPT
1.1/2"	T130-24RP	T130-24NPT	T131-24RP	T131-24NPT
2"	T130-32RP	T130-32NPT	T131-32RP	T131-32NPT



BALL VALVE Type 127 Nickel-plated Brass Full Throughput

CONSTRUCTION:

Nickel-plated pressure-brass valve body.
Hard chrome-plated brass ball.
Ball Seal - PTFE.
Stem Seal - Viton
Comes with flanges according to DIN 2632/33 PN 10/16.

Pressure: 1/4" - 4" 16 bar

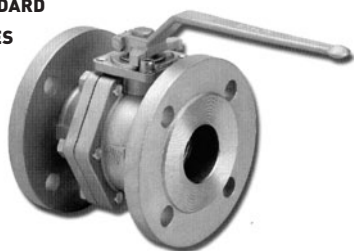
Temp. Range: -20°C to +150°C

Applications:

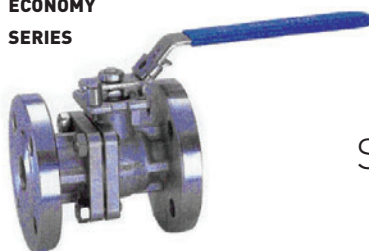
Water, steam, compressed air, oils, fuel, liquefied gases, etc.

Dim. Conct. Thread	Type 127 DIN fl.	Type 123 Handle
3/4"	T127-12	T123-12
1"	T127-16	T123-16
1.1/4"	T127-20	T123-20
1.1/2"	T127-24	T123-24
2"	T127-32	T123-32
2.1/2"	T127-40	T123-40
3"	T127-48	T123-48
4"	T127-64	T123-64

STANDARD SERIES



ECONOMY SERIES



BALL VALVE Type 137/138 DIN and ANSI Flanges Stainless Steel AISI 316 Standard and Economy Series

CONSTRUCTION:

CF8M/316 valve body.
AISI 316 ball.
Ball Seal - PTFE.
Stem Seal - Viton
Firesafe design.
Standard and economy series.
Comes with flanges according to DIN 2632/33 PN 10/16 and ANSI B16.5 Class 150

Pressure: 3/4" - 4" 16 bar

Temp. Range: -20°C to +150°C

APPLICATIONS:

Water, steam, compressed air, oils, fuel, liquefied gases, etc.

Dim. Conct. Thread	STANDARD Type 137 DIN fl.	ECONOMY Type 137E DIN fl.	STANDARD Type 138 ANSI 150#.	ECONOMY Type 138E ANSI 150#.
3/4"	T137-12SS	T137E-12SS	T138-12SS	T138E-12SS
1"	T137-16SS	T137E-16SS	T138-16SS	T138E-16SS
1.1/4"	T137-20SS	T137E-20SS	T138-20SS	T138E-20SS
1.1/2"	T137-24SS	T137E-24SS	T138-24SS	T138E-24SS
2"	T137-32SS	T137E-32SS	T138-32SS	T138E-32SS
2.1/2"	T137-40SS	T137E-40SS	T138-40SS	T138E-40SS
3"	T137-48SS	T137E-48SS	T138-48SS	T138E-48SS
4"	T137-64SS	T137E-64SS	T138-64SS	T138E-64SS

NEEDLE / REGULATION VALVES



TYPE 140
Construction:
 Brass valve body.
 BSP connection
Pressure: 1/4" - 3/4" 210 bar
Temp: -20°C to +150°C
Applications:
 Water, steam, comp. air, oils,
 fuel, liquefied gases.



TYPE 141
Construction:
 Carbon steel valve body.
 BSP connection
Pressure: 1/4" - 3/4" 350 bar
Temp: -20°C to +150°C
Applications:
 Water, steam, comp. air, oils,
 fuel, liquefied gases.



TYPE 142
Construction:
 Carbon steel valve body.
 BSP connection
Pressure: 1/4" - 3/4" 400 bar
Temp: -20°C to +150°C
Applications:
 Water, steam, comp. air, oils,
 fuel, liquefied gases.



TYPE 143
Construction:
 AISI 316 valve body.
 BSP=RP/NPT=F connection
Pressure: 3/4" - 1" 413 bar
Temp: -20°C to +150°C
Applications:
 Water, steam, comp. air, oils,
 fuel, liquefied gases.

Dim. Conct. Thread	Type 140 Brass Female BSP	Type 141 Carbon Steel Female BSP	Type 142 Carbon Steel Female BSP	Type 143 AISI 316 Female BSP
1/4"	T140-04	T141-04RP	T142-04RP	-
3/8"	T140-06	T141-06RP	T142-06RP	-
1/2"	T140-08	T141-08RP	T142-08RP	-
3/4"	T140-12	T141-12RP	T142-12RP	T143-12RPSS/FSS
1"	-	-	-	T143-16RPSS/FSS

NEEDLE / REGULATION VALVES With Check Valve



TYPE 144
Construction:
 Brass valve body.
 BSP connection
Pressure: 1/4" - 1/2" 210 bar
Temp: -20°C to +150°C
Applications:
 Water, steam, compressed air,
 oils, fuel, etc.



TYPE 145
Construction:
 Carbon steel valve body.
 BSP connection
Pressure: 1/4" - 1/2" 350 bar
Temp: -20°C to +150°C
Applications:
 Water, steam, compressed air,
 oils, fuel, etc.



TYPE 146
Construction:
 Carbon steel valve body.
 BSP connection
Pressure: 1/4" - 3/4" 400 bar
Temp: -20°C to +150°C
Applications:
 Water, steam, compressed air,
 oils, fuel, etc.



TYPE 147
Construction:
 AISI 316 valve body.
 BSP connection
Pressure: 3/4" - 1/2" 400 bar
Temp: -20°C to +150°C
Applications:
 Water, steam, compressed air,
 oils, fuel, etc.

Dim. Conct. Thread	Type 144 Brass Female BSP	Type 145 Carbon Steel Female BSP	Type 146 Carbon Steel Female BSP	Type 147 AISI 316 Female BSP
1/4"	T144-04RP	T145-04RP	T146-04RP	T147-04RPSS
3/8"	T144-06RP	T145-06RP	T146-06RP	T147-06RPSS
1/2"	T144-08RP	T145-08RP	T146-08RP	T147-08RPSS
3/4"	-	-	T146-12RP	-

BUTTERFLY VALVE Wafer Type 170/171/172/173 DIN/ANSI Flanges Standard and Economy Series



CONSTRUCTION:

Wafer type butterfly valve.
Cast-iron valve body.
AISI 316 / Aluminium bronze disc.
Gasket EPDM - Buna/NBR
Lock on the handle.
ISO 5211 Top for Actuator
Standard and economy series.
Comes with universal flange for DIN/ANSI

Pressure: 1.1/2" - 8" 16 bar

TEMPERATURE RANGE:
-20°C to +150°C

APPLICATIONS:
Water, air, oils, fuel, gases, etc.

Dim. Conct. Flange	STANDARD Type 170 EPDM Gasket 316 Disc	STANDARD Type 171 BUNA Gasket 316 Disc	STANDARD Type 172 EPDM Gasket Alu.Bronze Disc	STANDARD Type 173 BUNA Gasket Alu.Bronze Disc
1.1/2"	T170-38	T171-38	T172-38	T173-38
2"	T170-50	T171-50	T172-50	T173-50
2.1/2"	T170-63	T171-63	T172-63	T173-63
3"	T170-75	T171-75	T172-75	T173-75
4"	T170-100	T171-100	T172-100	T173-100
5"	T170-125	T171-125	T172-125	T173-125
6"	T170-150	T171-150	T172-150	T173-150
8"	T170-200	T171-200	T172-200	T173-200

Dim. Conct. Flange	ECONOMY Type 170E EPDM Gasket 316 Disc	ECONOMY Type 171E BUNA Gasket 316 Disc	ECONOMY Type 172E EPDM Gasket Alu.Bronze Disc	ECONOMY Type 173E BUNA Gasket Alu.Bronze Disc
1.1/2"	T170E-38	T171E-38	T172E-38	T173E-38
2"	T170E-50	T171E-50	T172E-50	T173E-50
2.1/2"	T170E-63	T171E-63	T172E-63	T173E-63
3"	T170E-75	T171E-75	T172E-75	T173E-75
4"	T170E-100	T171E-100	T172E-100	T173E-100
5"	T170E-125	T171E-125	T172E-125	T173E-125
6"	T170E-150	T171E-150	T172E-150	T173E-150
8"	T170E-200	T171E-200	T172E-200	T173E-200

AVAILABLE ON REQUEST



BUTTERFLY VALVE Lug Type DIN, ANSI Flanges Standard Series

CONSTRUCTION:

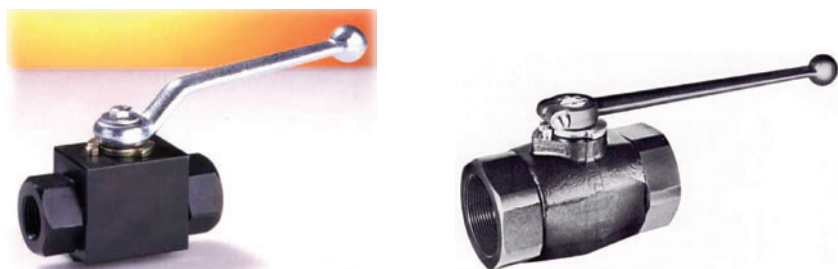
Lug type butterfly valve. Cast-iron valve body. AISI 316 / Aluminium bronze disc.
Gasket EPDM - Buna/NBR. Lock on the handle. ISO 5211 Top for Actuator.
Available for DIN or ANSI.

Pressure: 1.1/2" - 8" 16 bar

Temp. Range: -2°C to +150°C

APPLICATIONS:

Water, air, oils, fuel, gases, etc



From 1/8" to 1.1/4" is block valve (BKH).
1.1/2" and 2" have forged steel valve body (SKH).

CONSTRUCTION:

Block Valve: Valve body - steel 1/8" - 1.1/4"
Forged steel: Valve body - CK 45 1.1/2" - 2"
Hard chrome-plated steel ball.
Ball Seal - polyamide.
Stem Seal - BUNA N.
Comes with BSP and NPTF female thread.

Pressure: 1/8" - 1/2" 500 bar
3/4" 400 bar
1" - 2" 350 bar

Temp. Range: -10°C to +100°C

APPLICATIONS:

High pressure hydraulic, water, air, fuel, liquefied gases, liquids, etc.

BALL VALVE HIGH PRESSURE BKH/SKH Type 8000/8100

Dim. Conct. Thread	Type 8000 Female BSP	Type 8100 Female NPT
1/8"	T8000-02	T8100-02
1/4"	T8000-04	T8100-04
3/8"	T8000-06	T8100-06
1/2"	T8000-08	T8100-08
3/4"	T8000-12	T8100-12
1"	T8000-16	T8100-16
1.1/4"	T8000-20	T8100-20
1.1/2"	T8000-24	T8100-24
2"	T8000-32	T8100-32



BALL VALVE HIGH PRESSURE RKH Type 8000/8100 Stainless Steel AISI 316 L

CONSTRUCTION:

Block valve. Valve body - AISI 316L
AISI 316L ball
Ball Seal - polyamide.
Stem Seal - BUNA N.
Comes with BSP and NPTF female thread.

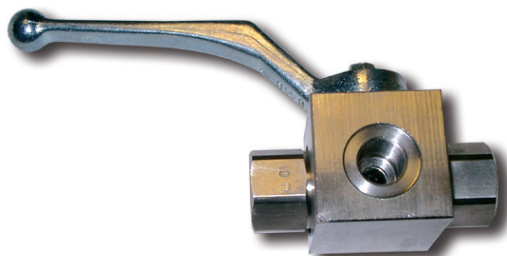
Pressure: 1/8" - 1/2" 500 bar
3/4" 400 bar
1" - 2" 350 bar

Temp. Range: -20°C to +120°C

APPLICATIONS:

High pressure hydraulic, water, air, fuel, liquefied gases, liquids, etc.

Dim. Conct. Thread	Type 8000 Female BSP	Type 8100 Female NPT
1/8"	T8000-02SS	T8100-02SS
1/4"	T8000-04SS	T8100-04SS
3/8"	T8000-06SS	T8100-06SS
1/2"	T8000-08SS	T8100-08SS
3/4"	T8000-12SS	T8100-12SS
1"	T8000-16SS	T8100-16SS
1.1/4"	T8000-20SS	T8100-20SS
1.1/2"	T8000-24SS	T8100-24SS
2"	T8000-32SS	T8100-32SS



BALL VALVE HIGH PRESSURE 3-WAY BK3 - Type 9000 - L-bore BK3 - Type 9100 - T-bore

CONSTRUCTION:

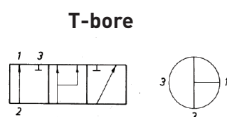
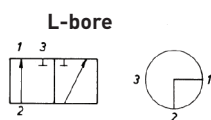
Block valve. Valve body - steel.
Hard chrome-plated steel ball.
Ball Seal - polyamide.
Stem Seal - BUNA N.
Comes with BSP female thread.

Pressure: 1/8" - 3/8" 400 bar
1/2" - 2" 350 bar

Temp. Range: -10°C to +100°C

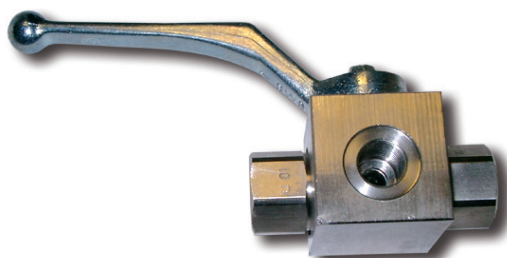
APPLICATIONS:

High pressure hydraulic, water, air, fuel,
liquefied gases, liquids, etc.



Dim. Conct. Thread	Type 9000 L-bore	Type 9100 T-bore
1/8"	T9000-02	T9100-02
1/4"	T9000-04	T9100-04
3/8"	T9000-06	T9100-06
1/2"	T9000-08	T9100-08
3/4"	T9000-12	T9100-12
1"	T9000-16	T9100-16
1.1/4"	T9000-20	T9100-20
1.1/2"	T9000-24	T9100-24
2"	T9000-32	T9100-32

7



BALL VALVE HIGH PRESSURE 3-WAY BK3 - Type 9000 - L-bore Stainless Steel AISI 316 L

CONSTRUCTION:

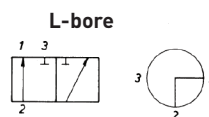
Block valve. Valve body - AISI 316L
AISI 316L ball
Ball Seal - polyamide.
Stem Seal - BUNA N.
Comes with BSP female thread.

Pressure: 1/4" - 3/8" 400 bar
1/2" - 1" 350 bar

Temp. Range: -20°C to +120°C

APPLICATIONS:

High pressure hydraulic, water, air, fuel,
liquefied gases, liquids, etc.



Dim. Conct. Thread	Type 9000 L-bore
1/4"	T9000-04SS
3/8"	T9000-06SS
1/2"	T9000-08SS
3/4"	T9000-12SS
1"	T9000-16SS



BALL VALVE HIGH PRESSURE 6000 PSI PB Type 82 Stainless Steel AISI 316 L

CONSTRUCTION:

Block valve. Valve body - AISI 316L
AISI 316L ball.
Ball Seal - PEEK.
Stem Seal - PTFE/PEEK.
Comes with BSP/NPT female thread.

Pressure: 1/4" - 1" 413 bar

Temp. Range: -50°C to +250°C

APPLICATIONS:

High pressure hydraulic, water, air, fuel,
liquefied gases, liquids, etc.

Dim. Conct. Thread	Type 8300	Bore Diam. mm	Type 8400	Bore Diam. mm
	BSP		NPT	
1/4"	T82B-04SS	10	T82N-04SS	10
3/8"	T82B-06SS	10	T82N-06SS	10
1/2"	T82B-08SS	10	T82N-08SS	10
3/4"	T82B-12SS	13	T82N-12SS	13
1"	T82B-16SS	19	T82N-16SS	19



BALL VALVE HIGH PRESSURE 10.000 PSI UB Type 83 Stainless Steel AISI 316 L

CONSTRUCTION:

Block valve. Valve body - AISI 316L
KAISI 316L ball.
Ball Seal - PEEK.
Stem Seal - PTFE/PEEK.
Comes with BSP/NPT female thread.

Pressure: 1/4" - 1" 690 bar

Temp. Range: -20°C to +250°C

APPLICATIONS:

High pressure hydraulic, water, air, fuel,
liquefied gases, liquids, etc.

Dim. Conct. Thread	Type 8300	Bore Diam. mm	Type 8400	Bore Diam. mm
	BSP		NPT	
1/4"	T83B-04SS	10	T83N-04SS	10
3/8"	T83B-06SS	10	T83N-06SS	10
1/2"	T83B-08SS	10	T83N-08SS	10
3/4"	T83B-12SS	13	T83N-12SS	13
1"	T83B-16SS	19	T83N-16SS	19

CHECK VALVE Type «EUROPA»



Construction: Brass valve body. Glass fiber reinforced synthetic material valve disc. Valve seat has vulcanized elastic sealing of synthetic special rubber. Valve disc coating and spring are CrNi steel.

Working Pressure: 3/8" - 1" 25 bar
1.1/4" - 2" 18 bar
2.1/2" - 4" 12 bar

Temp. Range: Max. -20 +100°C

Applications: Sanitary and heating systems, water, compressed air, hydraulic, fuel, etc. Can be assembled in any position. Comes with BSP female thread.

Opening pressure: 0.05 bar

Type/dim.	1/4"	3/8"	1/2"	3/4"	1"	1.1/4"	1.1/2"	2"	2.1/2"	3"	4"
Check Valve Part no. EURO100	-04	-06	-08	-12	-16	-20	-24	-32	-40	-48	-64
Filter for Check Valve Part no. EURO102	-04	-06	-08	-12	-16	-20	-24	-32	-40	-48	-64



CHECK VALVE «Inline Check Valves» Snap-Tite Type CPIFF/3C

Construction: Valve body/inside parts of steel. Available with BSP/NPT female thread. Opening pressure 5 PSI (0.35 bar). Valves for opening pressure 1 Bar, 1.75 Bar and 4.5 Bar available on request. VITON gasket.

Working Pressure: 1/4" - 1" 5000 PSI (350 bar). 1.1/4" - 2" 3000 PSI (210 BAR)

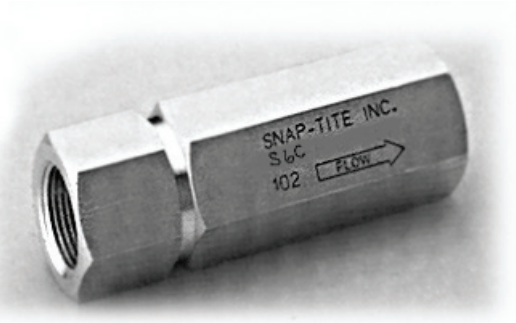
Temp. Range: -29°C to +190°C

Applications: Wide application area where free flow in one direction and blocked flow in the opposite direction is required.

Safety factor 4:1

Dim.	1/4"	3/8"	1/2"	3/4"	1"	1.1/4"	1.1/2"	2"
Hex. mm	19.5	25.40	31.75	35.05	44.45	50.80	63.50	82.55
Length mm	50.04	66.04	82.55	109.98	121.41	146.30	165.35	184.90
Flow l/min.	11.40	30.30	45.40	75.70	113.55	340.65	473.15	662.40
Weight kg	0.09	0.11	0.41	0.57	1.02	1.70	3.54	5.90
Part no. BSP	CPIFF-2RP	CPIFF-3RP	CPIFF-4RP	CPIFF-6RP	CPIFF-8RP	3C20RP-RP	3C24RP-RP	3C32RP-RP
Part no. NPT	CPIFF-2F	CPIFF-3F	CPIFF-4F	CPIFF-6F	CPIFF-8F	3C20F-F	3C24F-F	3C32F-F

CHECK VALVE «Inline Check Valves» Snap-Tite Type S6C AISI 316



Construction: Valve body and inside parts of AISI 316 stainless steel. Comes with NPT female thread as standard. Available with BSP and JIC thread on request. Opening pressure 5 PSI (0.35 BAR). Valves for different opening pressures available on request. VITON gasket.

Working Pressure: 10000 PSI (690 bar).

Temp. Range: -15°C to +170°C

Applications: Wide application area where free flow in one direction and blocked flow in the opposite direction is required.

Safety factor 4:1

Dim.	1/4"	3/8"	1/2"	3/4"	1"
Hex. mm	19.5	28.45	31.75	41.15	47.75
Length mm	71.60	85.85	94.75	124.70	154.20
Flow l/min.	11.40	30.30	45.45	75.70	113.55
Weight kg.	0.13	0.37	0.54	0.93	1.54
Part no. NPT	S6C4F-F	S6C6F-F	S6C8F-F	S6C12F-F	S6C16F-F