

# Seawater Pump Unit

## 60 m<sup>3</sup>/h

### KEY FEATURES:

- Manual operated unit
- Local control
- Optional remote control (5 connections)
- 60 m<sup>3</sup>/h @ 12 bar (@ 60 Hz power supply)

### OPERATIONAL DATA:

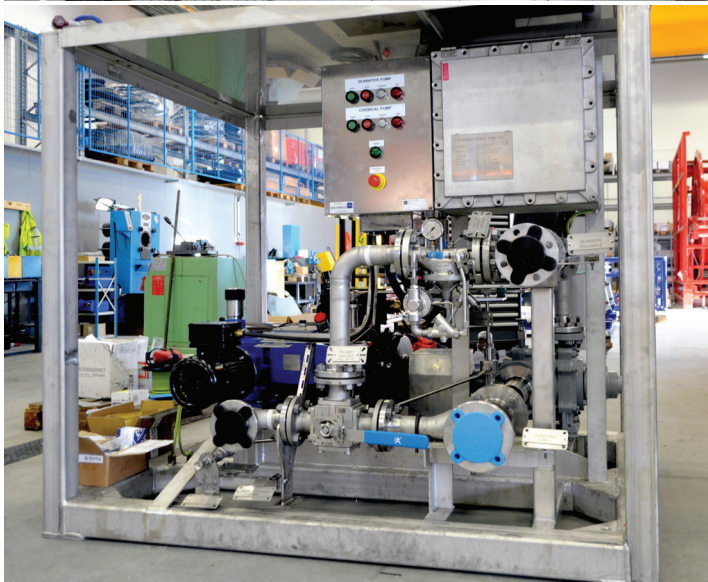
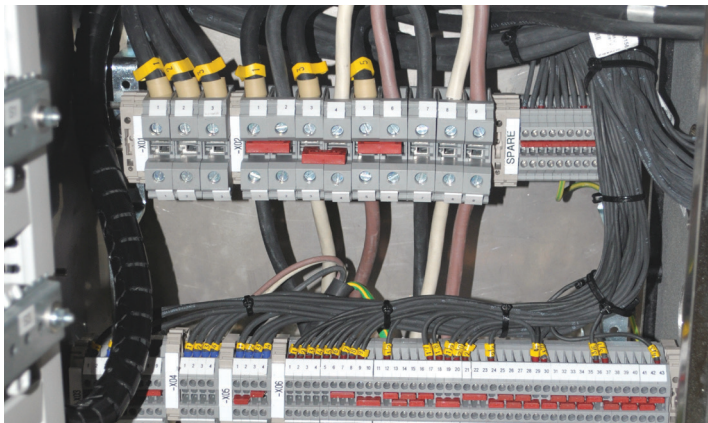
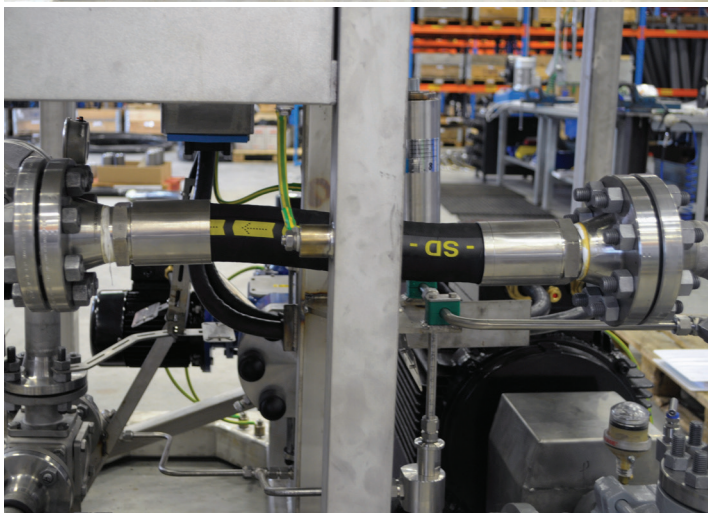
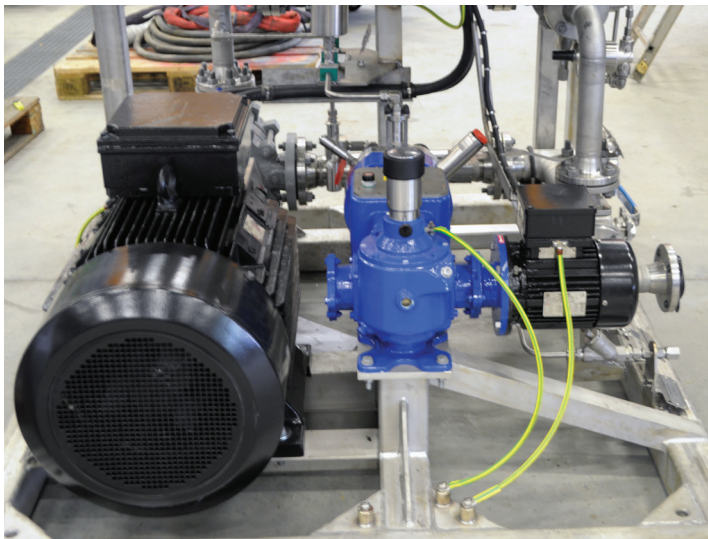
This unit includes a 2.7-1 frame with a 2 stage seawater pump capable of delivering 60 m<sup>3</sup>/h @ 12bar pressure (built in pressure regulating valve), in addition a chemical additive pump is included to mix chemicals into the seawater discharge line for cleaning purpose.

The unit can be used as a supply unit for tank/pit cleaning systems (rotation nozzles) onboard vessels/platforms.



FLUID CONTROL®





#### TECHNICAL DATA:

Unit dimensions (L x W x H):	1 650 mm x 1 800 mm x 1 500 mm, incl lifting chains
MGW:	1 350 kg
Approvals:	ATEX zone 1, DNV 2.7-1 (frame), Norsok Z-015
Power Supply:	400-440-480/660-690 VAC 50/60 Hz 62 Kw (max)
Water Supply:	Fresh/sea water (Chicago claw connector), max 60 m³/h Recommended max seawater temperature to be 20° C (due to corrosion risk)
Water inlet:	3" ANSI 150# flange
Discharge outlet:	2" ANSI 300# flange
Drain outlet:	2" ANSI 150# flange
Chemical inlet:	½" BSPFM
Seawater pump discharge capacity:	60 m³/hour @12 bar
Chemical additive pump:	1 l/min @ 12 bar (adjustable rate)
Temperature range:	0-40° C
Seawater supply:	Max 5 bar pressure

#### Fluid Control Service AS

Ljosheimsvegen 1  
4050 Sola, Norway

Tel: +47 51 64 49 50  
Email: [post@fluidcontrol.no](mailto:post@fluidcontrol.no)

[www.fluidcontrol.no](http://www.fluidcontrol.no)

Copyright © 2019 Fluid Control. All rights reserved.